



# Circle U.

European University Alliance

**Presentation for ECTS-MA, 6 May 2021**

Einar Meier

Coordinator for Circle U.

[einarm@uio.no](mailto:einarm@uio.no)

## Who Are We?

### Seven “Likeminded” Universities

- National flagships
- Research Intensive
- Comprehensive
- Located in capitals or large cities

Coordinator University:  
University of Oslo



## A Few Figures



7  
Universities



333,388  
Students



50,967  
Staff



79  
Faculties



2,216  
Study  
programmes



1  
Vision



**275+** ERC grants  
**700+** H2020  
projects

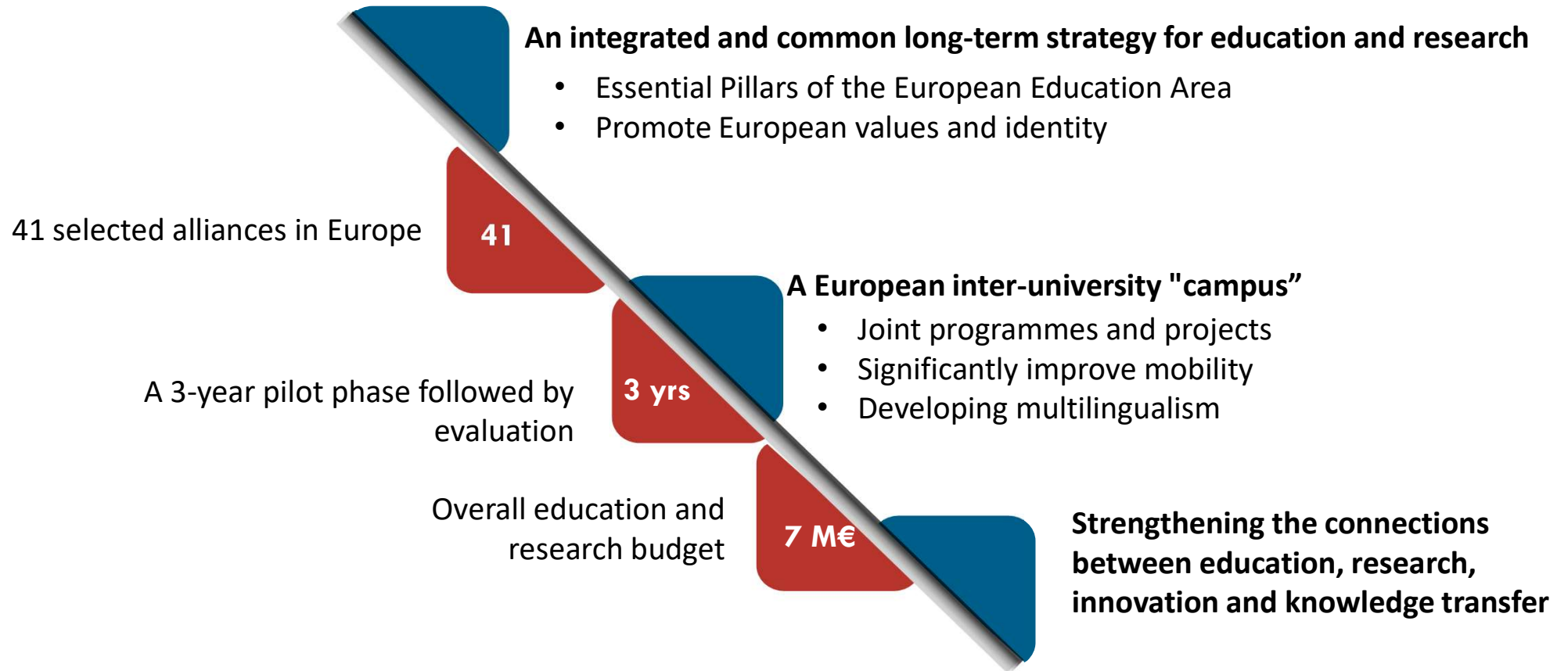


**UiO** : University of Oslo

HUMBOLDT-UNIVERSITÄT ZU BERLIN



## What Is a European University?



# Who Are our Associated Partners?

## Local Authorities

- The City of Aarhus
- Walloon Brabant Provincial authority
- City of Oslo
- London Council for Westminster
- London Council for Lambeth
- City of Paris
- Ile-de-France Region

## NGOs and non-profit

- Constructive Institute (Danish NGO)
- Citizens United NGO (UK NGO)
- Studenterhus Aarhus
- Generation N (German student organisation)

## Hospitals

- Aarhus University Hospital
- Oslo University Hospital
- Clinical Centre of Serbia
- Cliniques Universitaires Saint-Luc (Belgium)
- CHU UCL Namur (Belgium health organization)
- AP-HP.NORD & AP-HP CENTRE – Université de Paris

## University networks and national institutions

- The Coimbra Group (University Network)
- The Guild (University Network)
- The Norwegian Directorate for ICT and Joint Services in Higher Education and Research
- Serbian Ministry responsible for Education and Science Policy

**34 associated partners**



## Cultural institutions

- Museum for Natural History Berlin
- Nobel Institute

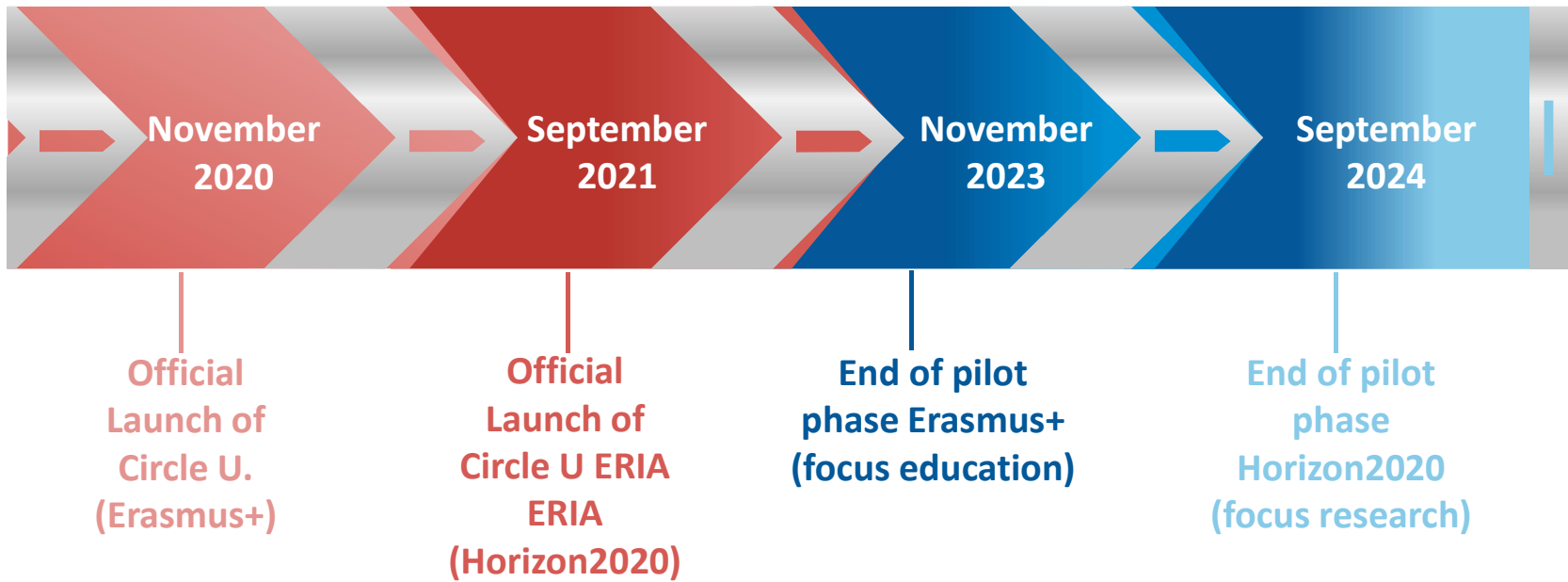
## Business and innovation

- ImpactHUB Berlin
- Humboldt Innovation
- GameLab (German business organization)
- SKIFT - Business Climate Leaders (Norwegian business organization)
- Medicen Paris Region
- Oslo Tech (Science Park)
- Science Technology Park Belgrade
- Louvain Innovation Network
- Inven2 (University of Oslo Technology Transfer Office)
- Partnerforum (Norway)



**Circle U.**  
European University Alliance

# Timelines



## Objectives in Education

**1**

**Increase the international exposure of students and staff substantially**

**2**

**Establish an innovative collaboration model linking education and research and connecting partner universities**

**3**

**Improve the social and academic integration of students**

**4**

**Co-develop and implement challenge-based courses and programmes across universities and disciplines**

**5**

**Increase students' engagement in innovation approaches to sustainability**

**6**

**Become a proactive agent in defining the future of the European Education Area**

## Objectives in R&I

**1**

**Fostering interdisciplinarity to co-construct solutions with other sectors**

**2**

**Involving citizens and society in research and innovation**

**3**

**Strengthening human capital**

**4**

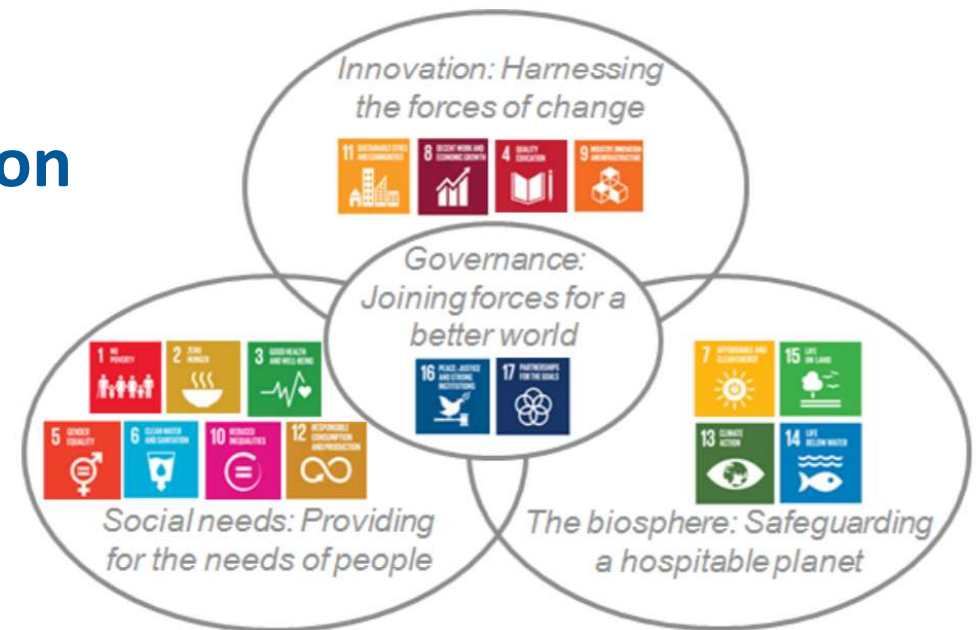
**Structuring Research and Innovation collaboration at the European level, among pilot Alliances**



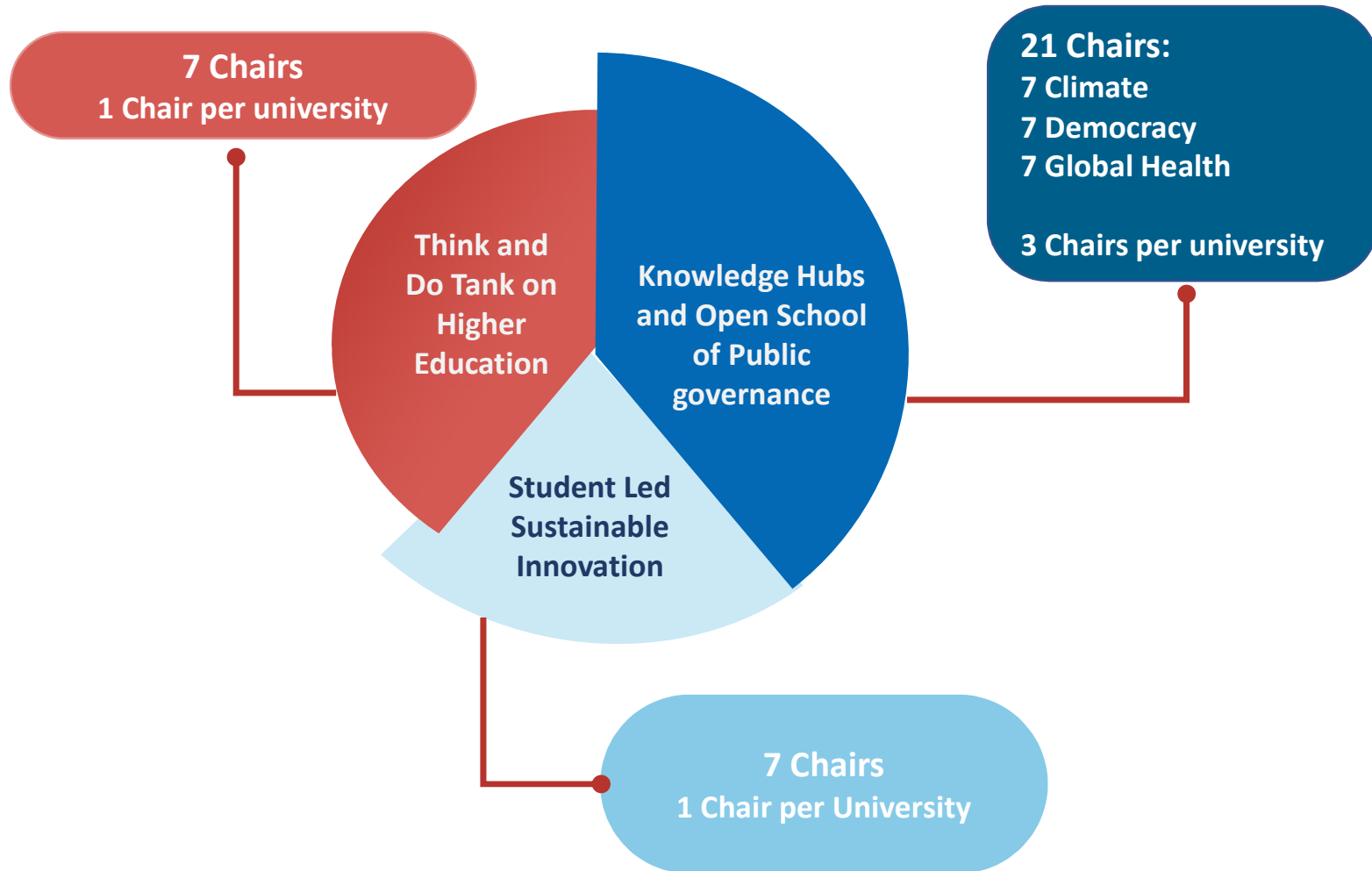
## 4 Core Themes

- Student led sustainable innovation
- Democracy
- Global health
- Climate

Based on four transitions towards the SDGs identified by the BOHEMIA study



## 35 Circle U. Academic Chairs



## Circle U. Knowledge Hubs

Climate  
Hub

Global Health  
Hub

Democracy  
Hub

### Education

- Thematic Seminars and events
- Interdisciplinary Summer Schools
- Joint Courses and programmes
- Open School of Public Governance

### Research

- Sandboxes with associated partners
- Circle U. Prize showcasing interdisciplinary research
- Seedfunding for Interdisciplinary networks

## Involving Citizens and Society in R&I

### **Climate**

#### **Training Programme for Practitioners on Climate**

Shape a training programme specifically targeted at non-academics.

### **Democracy**

#### **“Democracy in Schools” Initiative**

Pilot research action on the perception of democracy among young Europeans, gathering researchers from the Circle U. community as well as schools.

### **Global Health**

#### **Public Interactive Lecture Series on Global Health**

Interactive and accessible to the general public, these lectures will involve researchers from Circle U. universities as well as external stakeholders



**Circle U.**  
European University Alliance

## Open School of Public Governance

- Relating interdisciplinary knowledge on climate change, global health and democracy with governance challenges.
- Connecting the Knowledge Hubs through the development of
  - Joint interdisciplinary courses and programmes on Masters and PhD levels
  - Continuous professional microcredential development programme.



**Circle U.**  
European University Alliance

## Student Led Sustainable Innovation

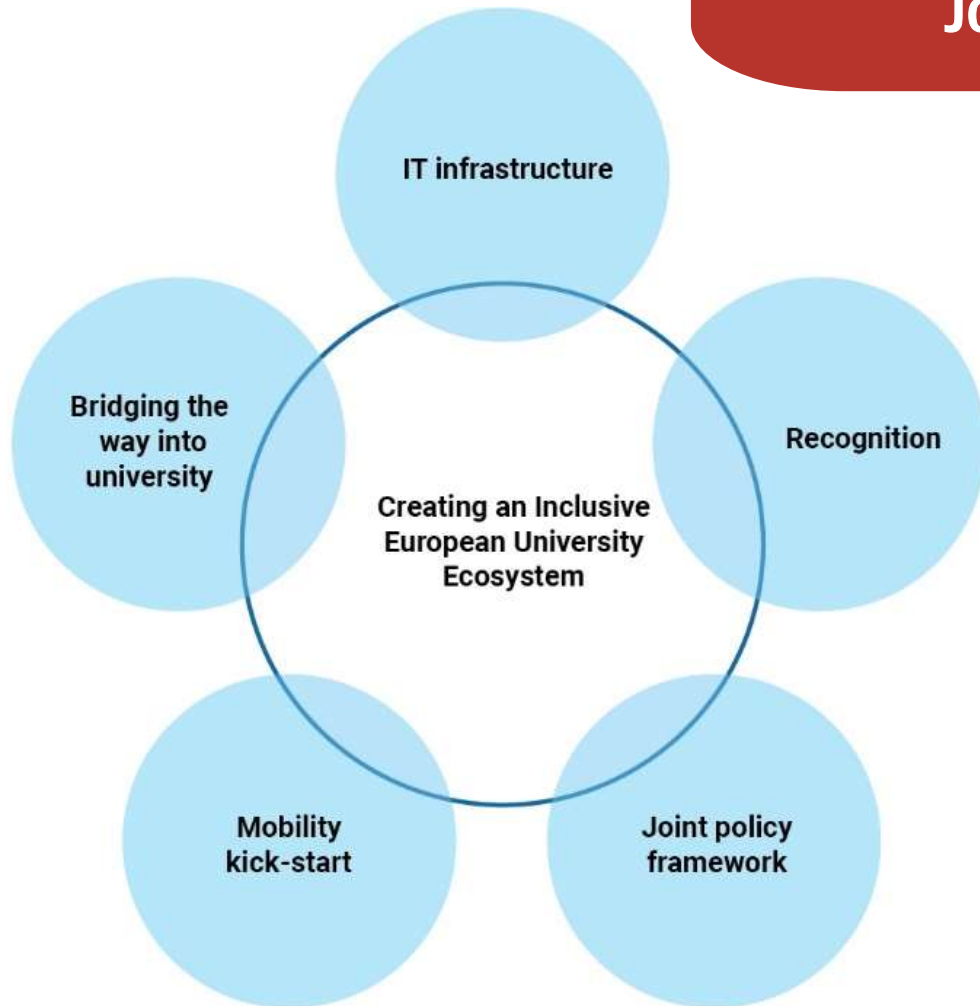
### The Circle U. Challenge

- Interdisciplinary and international teams of **students solve challenges posed by external partners**

- **Network of women entrepreneurs** aimed at female graduate and postgraduate students
- **Online training programme** on sustainable innovation and entrepreneurship

**Sustainable  
innovation and  
entrepreneurship**

## Joint Infrastructures and Policies



- Joint frameworks and infrastructures for mobility and sharing educational offerings.
- A system for automatic recognition of credits.
- Sharing best practice and developing new ways of «onboarding» students in the academic community, to secure diversity and reduce drop out rates.

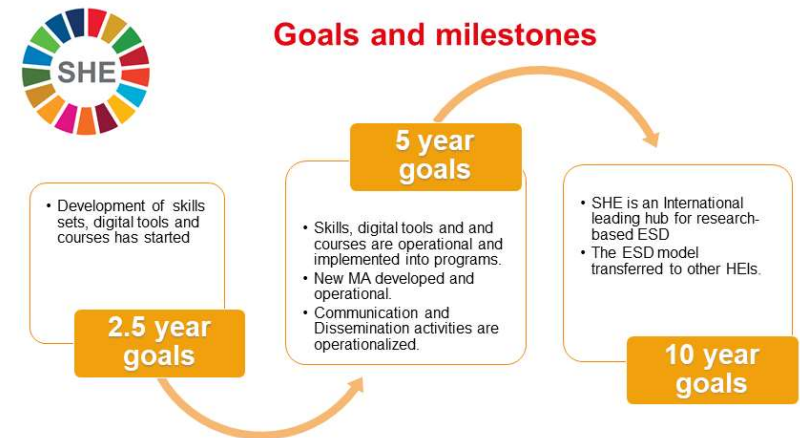
## Consequences for UiO's Faculty of Medicine?

- New forms of interaction across programmes, disciplines and national borders.
- Ambition to simplify systems and administrative procedures to enable increase in cooperation and exchanges of students and staff in all fields.
- Global health: Platform for recruitment and collaboration for the masters' programme in International Community Health and the Center for Global Health.
- European platform for the faculty's engagement in innovation and sustainable healthcare education.
  - Student-led innovation activities connected to the planned Innovation Growth House.
  - Thematic resonance between the focus on sustainable development and the Centre for Sustainable Healthcare Education (SHE) – a Norwegian Centre for Excellence in Education.



SHE's vision is to educate change agents in health care, so that UN's Sustainable Development Goals become a matter of course - in the face of for example pandemics, antibiotic resistance or the aging population.

**SHE**  
Centre for Sustainable  
Healthcare Education



Activities	8 work packages	Student involvement	New Master's programme	Public events (SHE Talks)	Student scholarships
Topics	Making wise health decisions	Public health surveillance and vaccine hesitancy	Priorities in health service	Team-building and decision-making	Climate and health

## For More Information

- **The Circle U. Newsletter:** <https://www.circle-u.eu/newsletter/index.html>
- **The Circle U. website** <https://www.circle-u.eu/education-research/>

## To Connect

- **Contact points in the seven universities:** <https://www.circle-u.eu/about/contact/>
- **Follow us on Twitter:** [@CircleU\\_eu](https://twitter.com/CircleU_eu)