

ANATOMSKE OSNOVE MODELACIJE ZOB

Izbor modelacij študentov 2. letnika dentalne
medicine

Študijsko leto 2022/2023

Avtorji modelacij:

- ▶ Ana Babnik Jeglič
 - ▶ Žan Bohinc
 - ▶ Lea Hren Strah
 - ▶ Katarina Ivančič
 - ▶ Ahmet Kahrimanović
 - ▶ Lovro Knez
 - ▶ Olja Kolenc
 - ▶ Urša Matotek
 - ▶ Olja Milutin
 - ▶ Ula Oblak
 - ▶ Barbara Podnar
 - ▶ Jakob Pokeržnik
 - ▶ Alja Primc
 - ▶ Rebeka Lea Sajko
 - ▶ Nina Šerak
 - ▶ Gal Trost
 - ▶ Kamil Wahibi
 - ▶ Brina Završnik
 - ▶ Eva Zupan
- 

Ana Babnik Jeglič































Žan Bohinc





























Lea Hren Strah





































Katarina Ivančič

































Ahmet Kahrimanović





















Lovro Knez































Olja Kolenc





















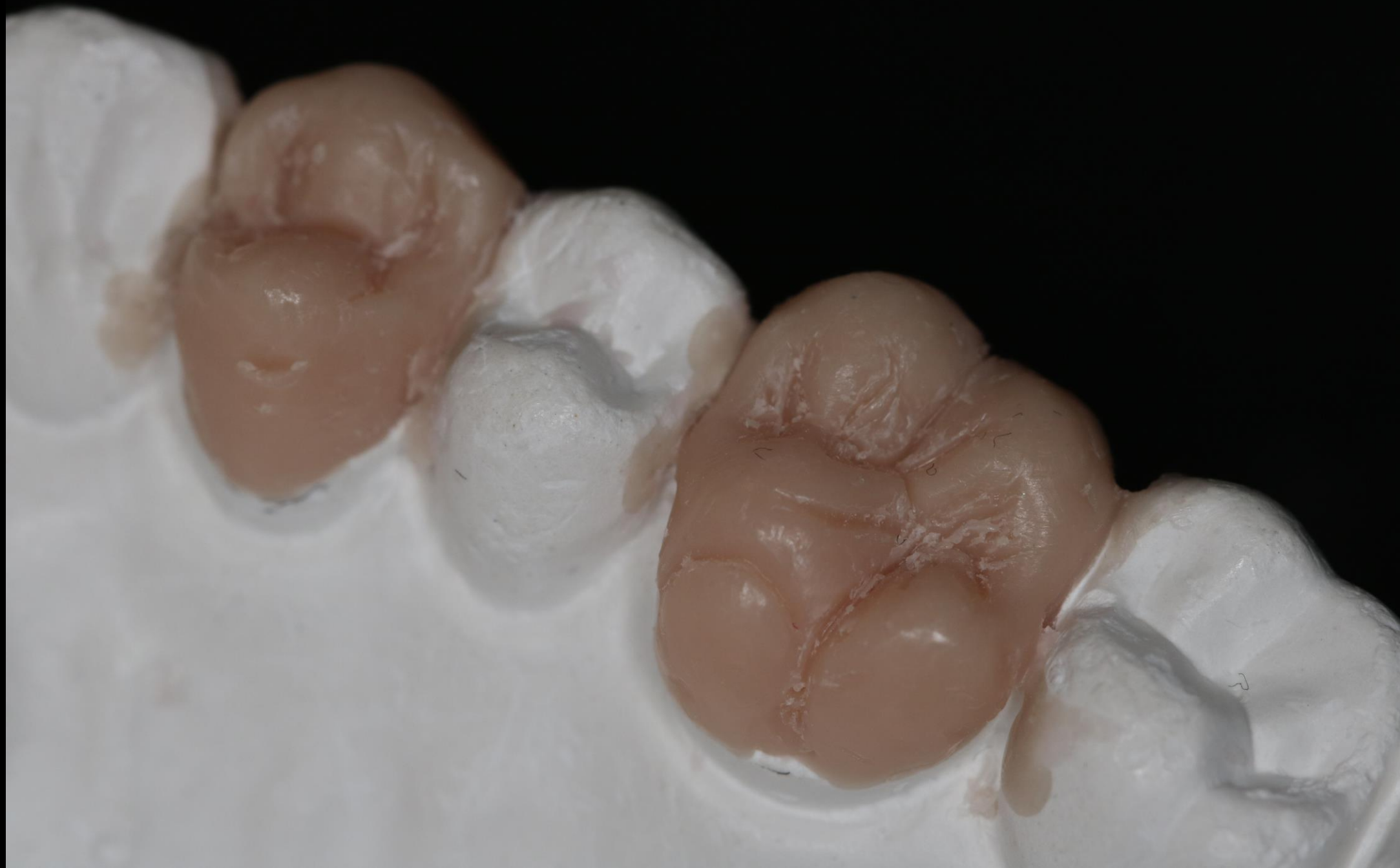






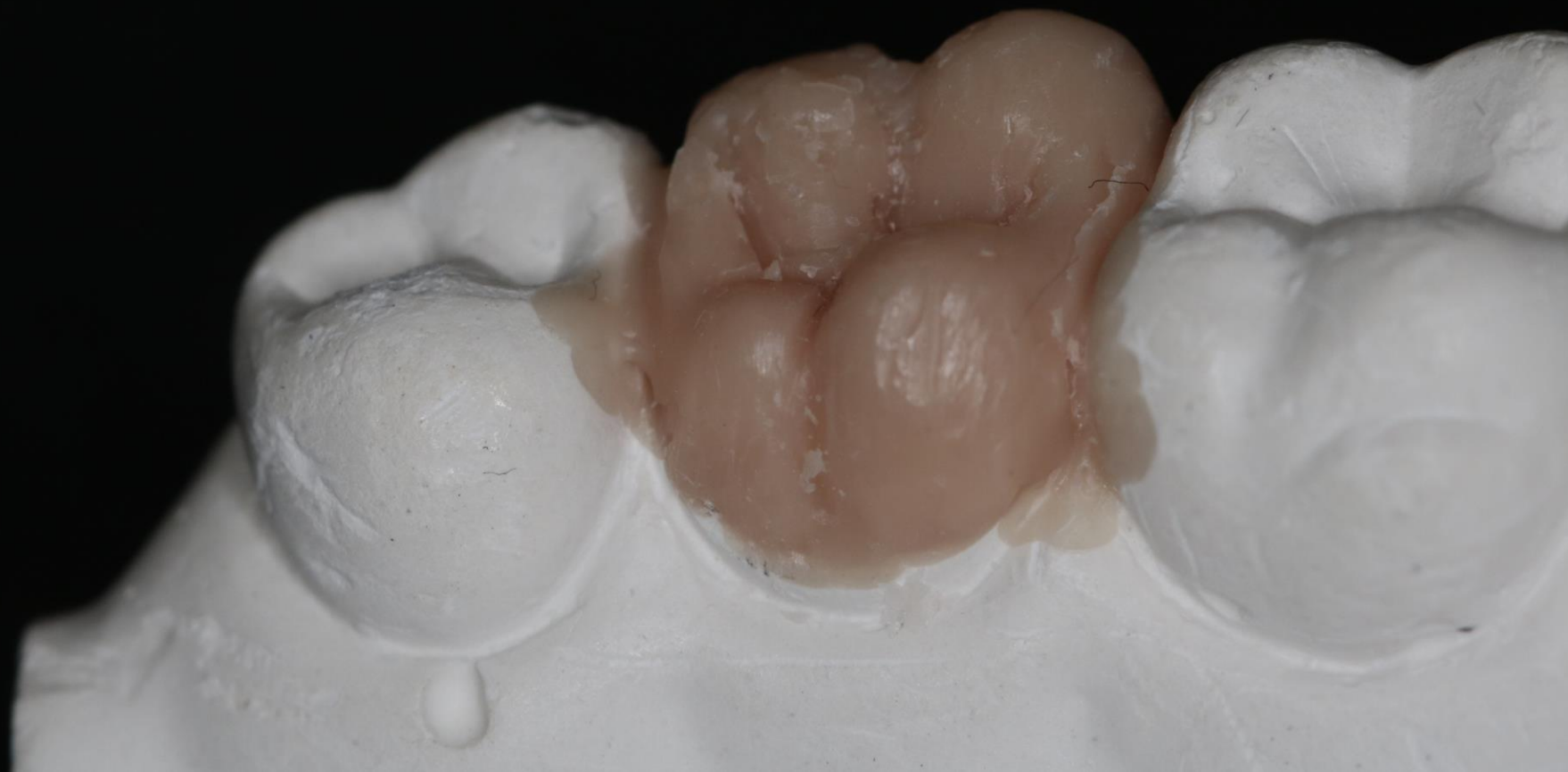


Urša Matotek























Olja Milutin









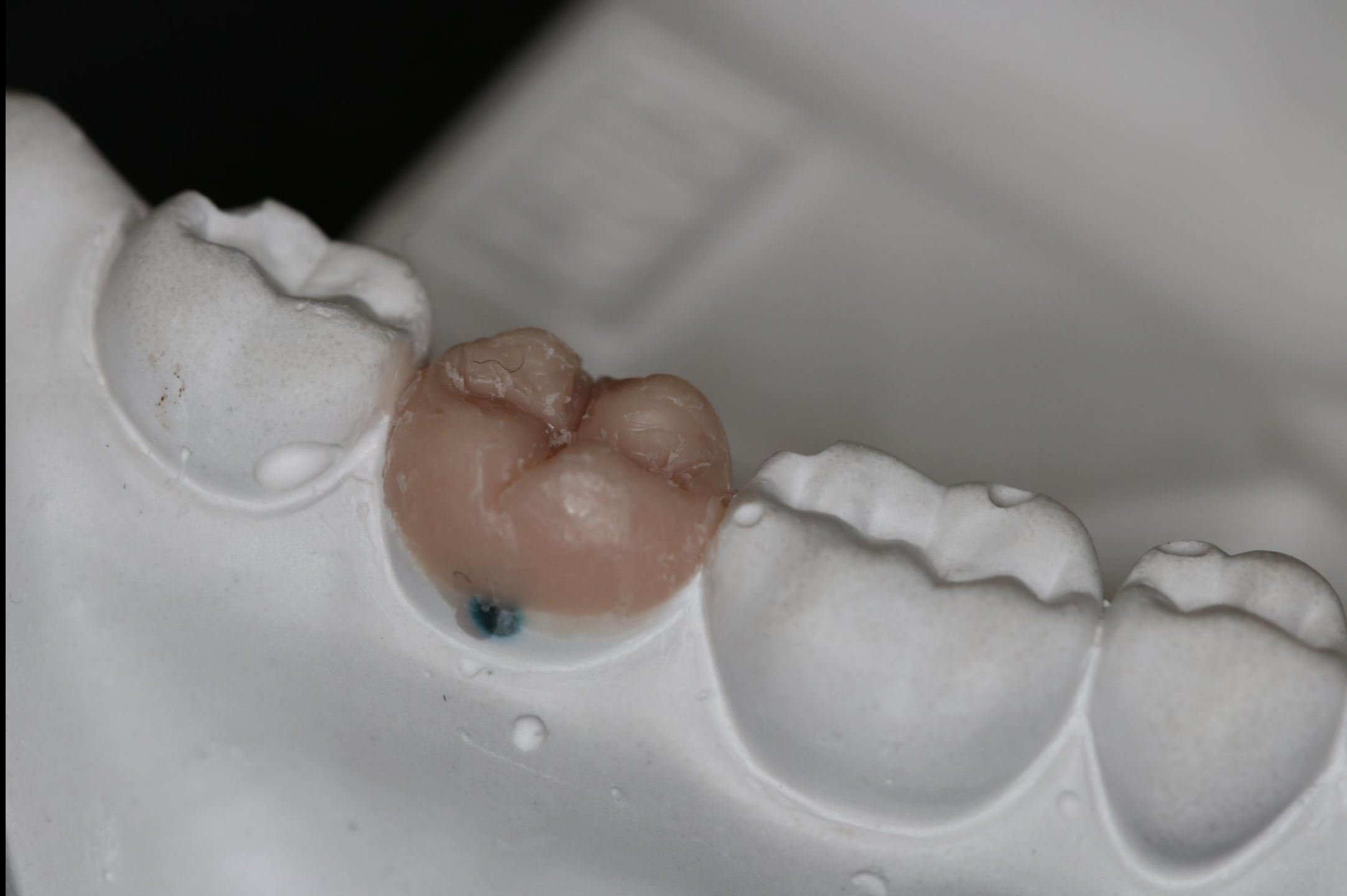


























Ula Oblak































Barbara Podnar

































Jakob Pokeržnik







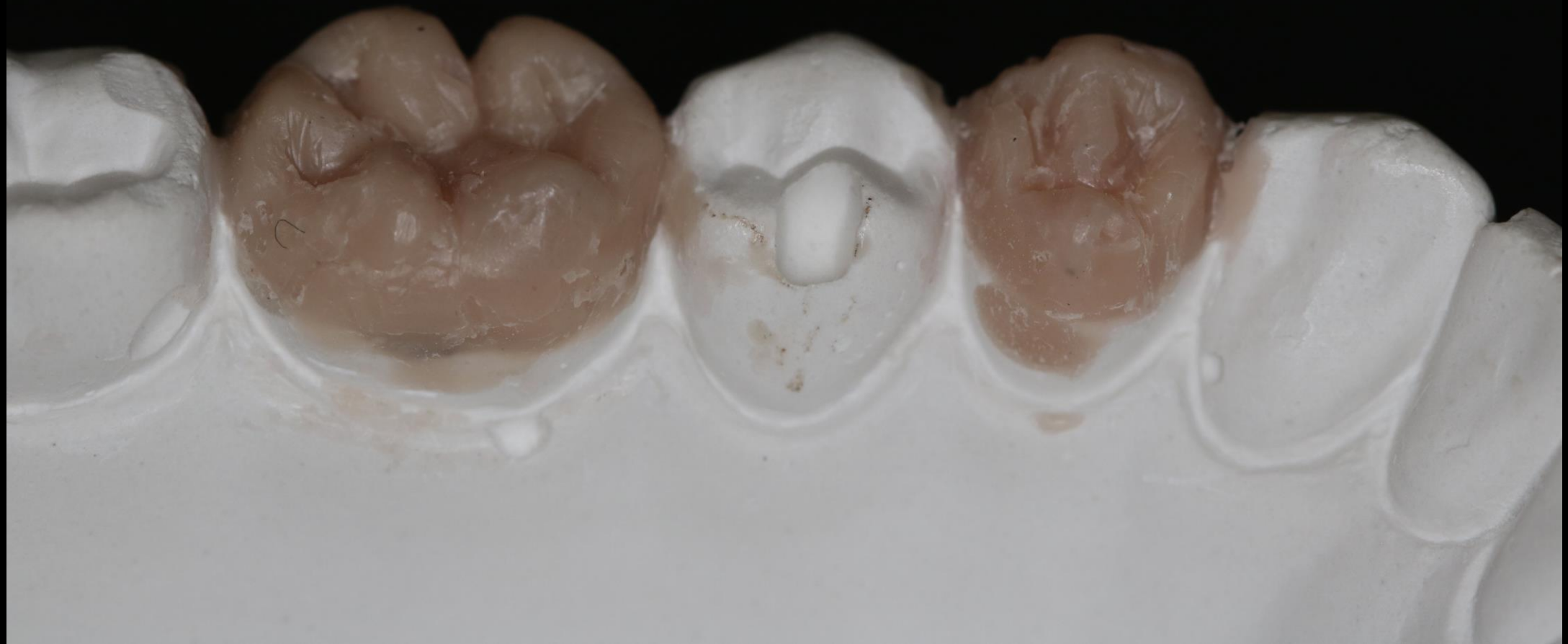


















Alja Primc



















Rebeka Lea Sajko

























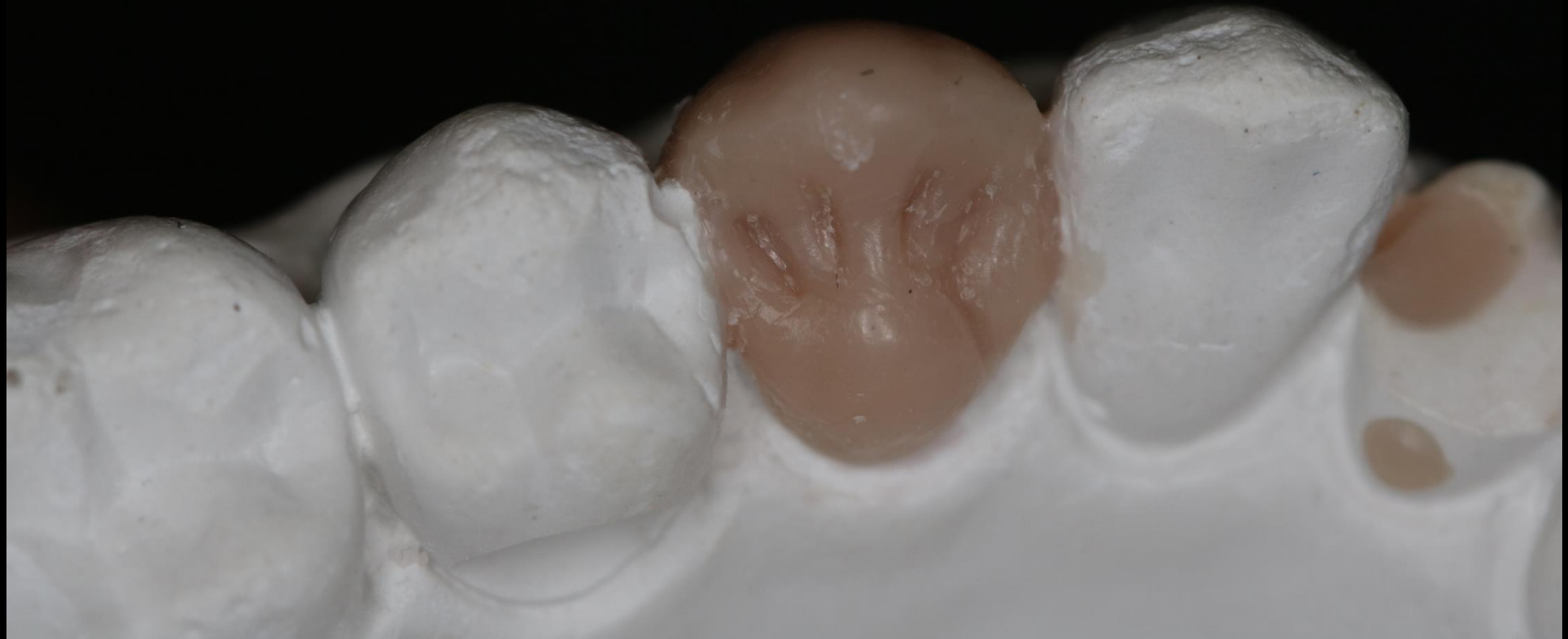












Nina Šerak















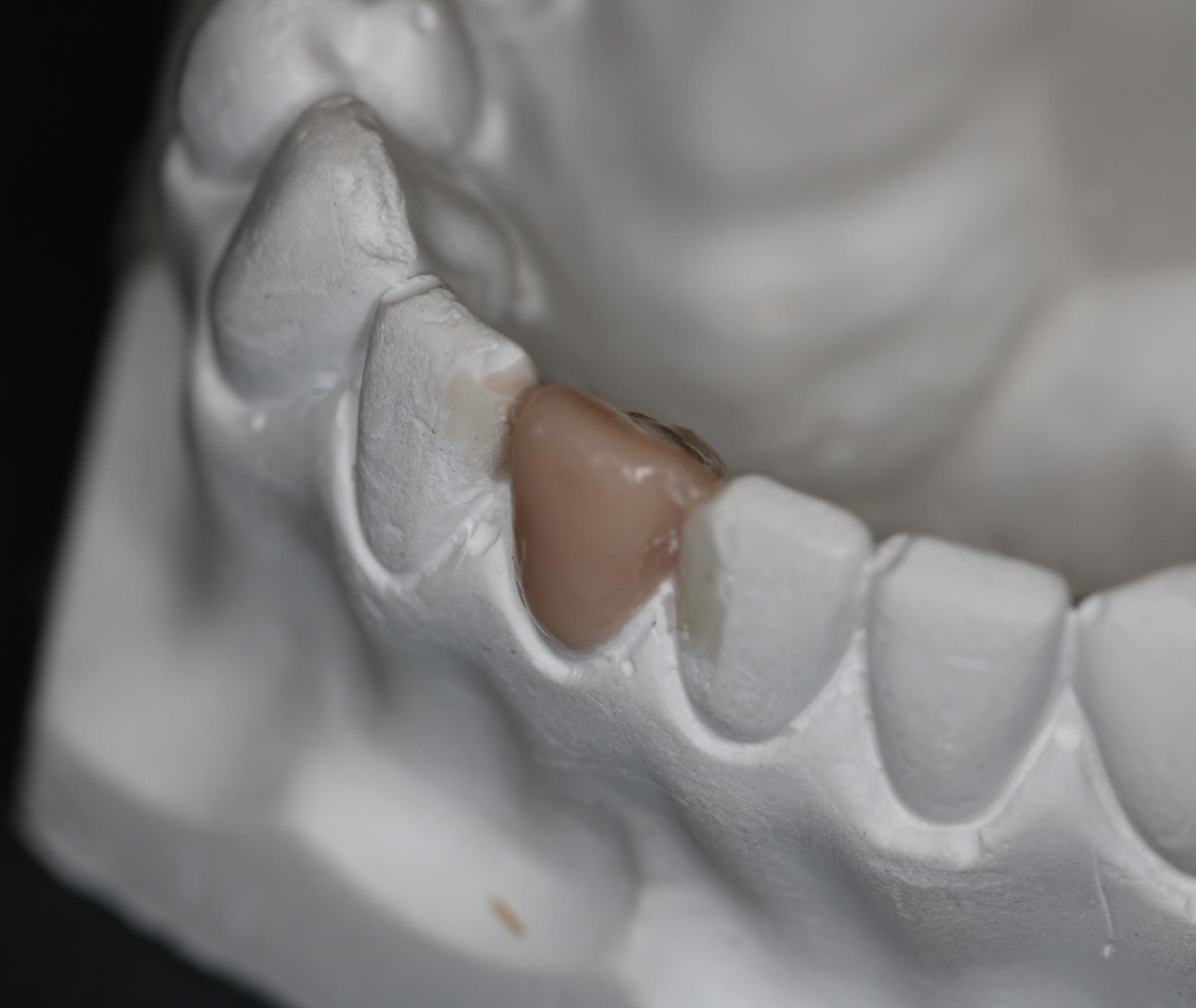












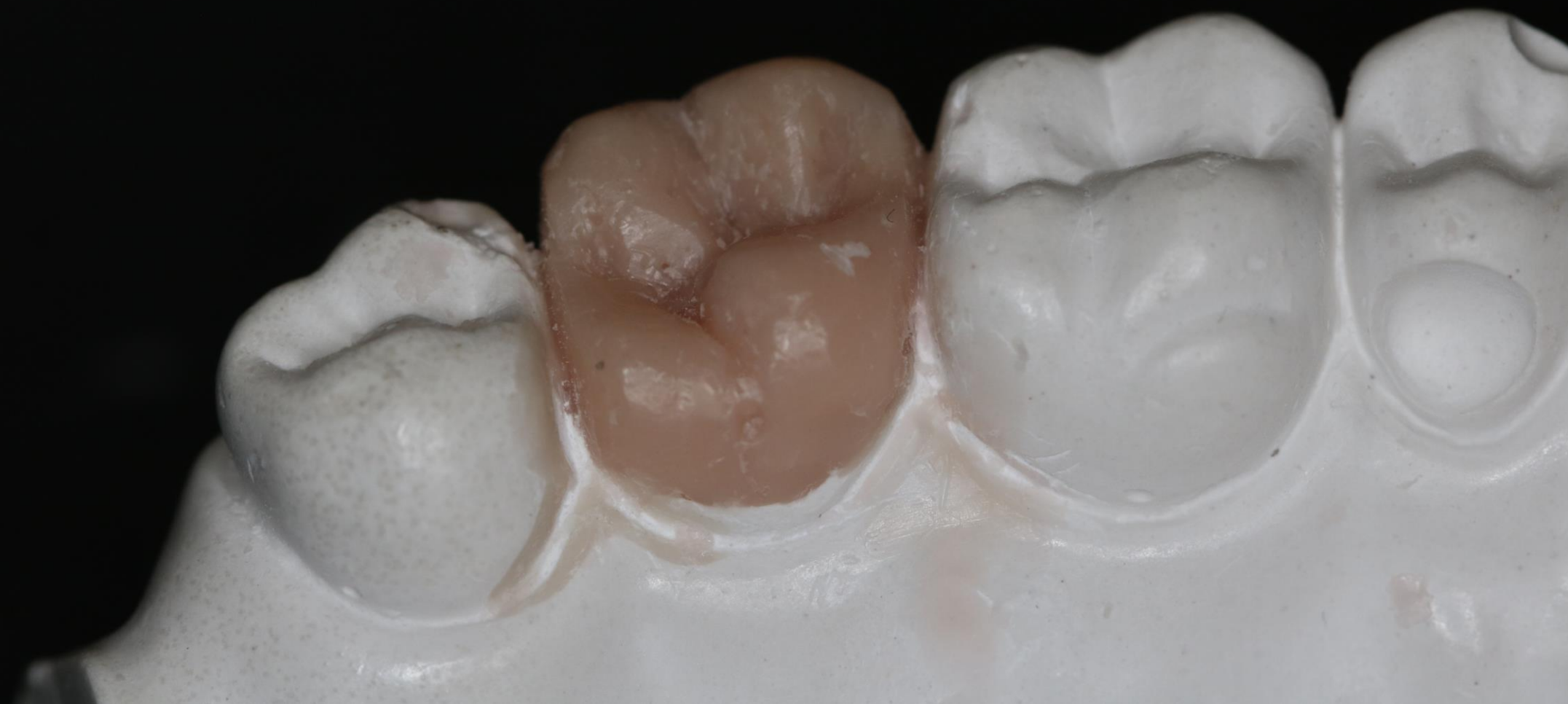








Gal Trost









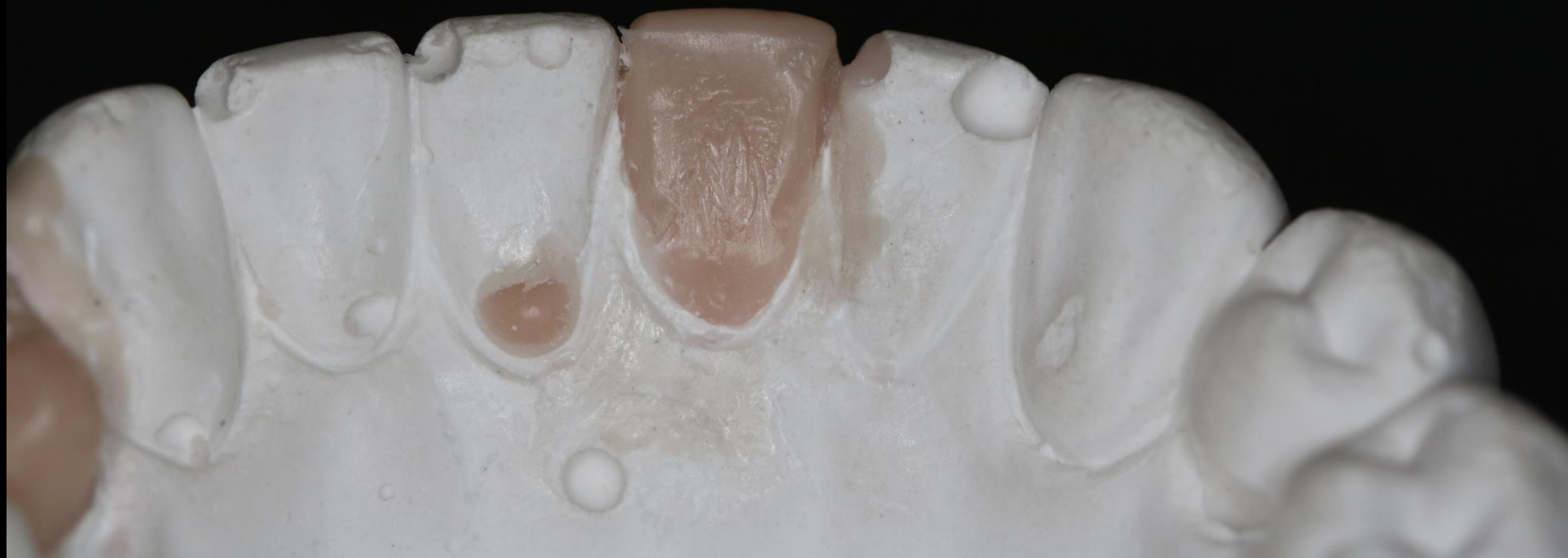








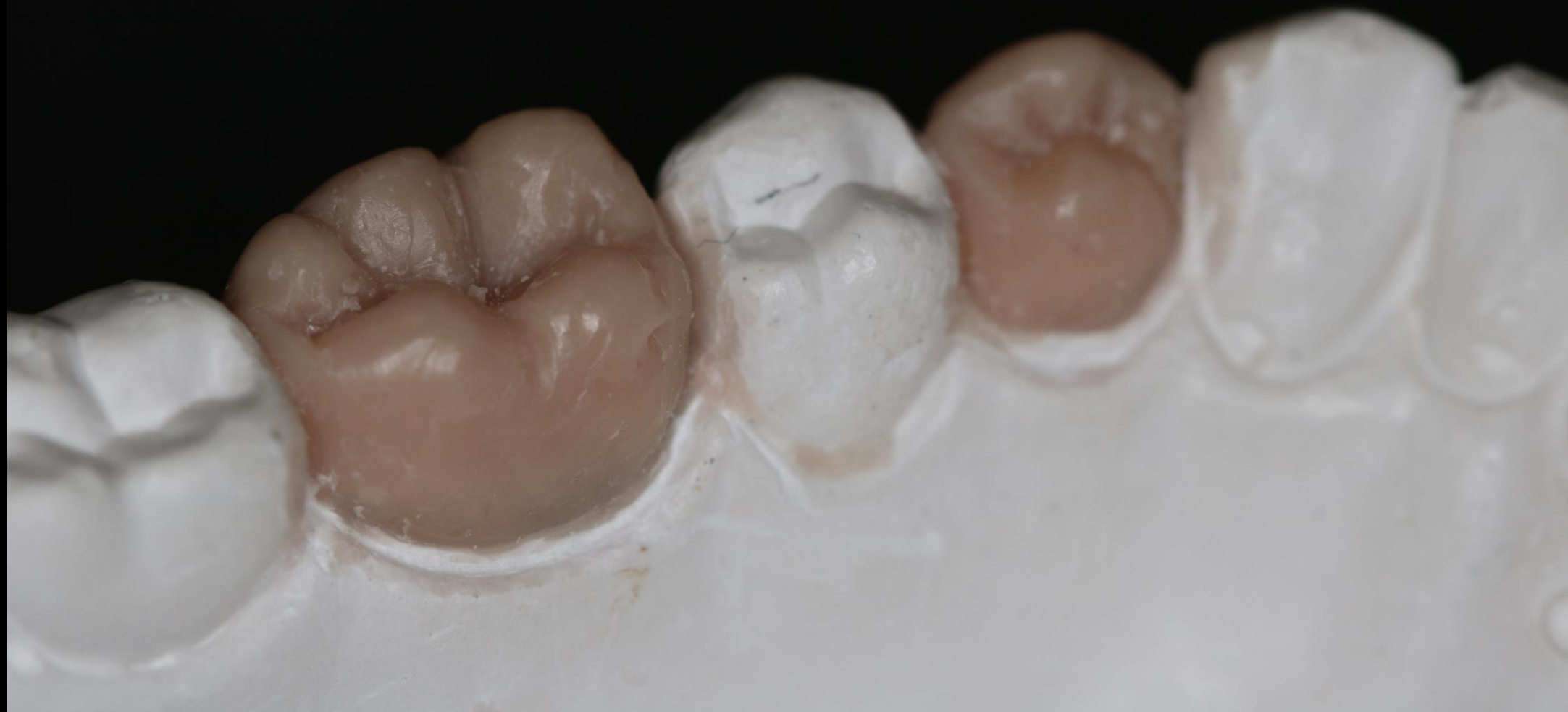
















Kamil Wahibi





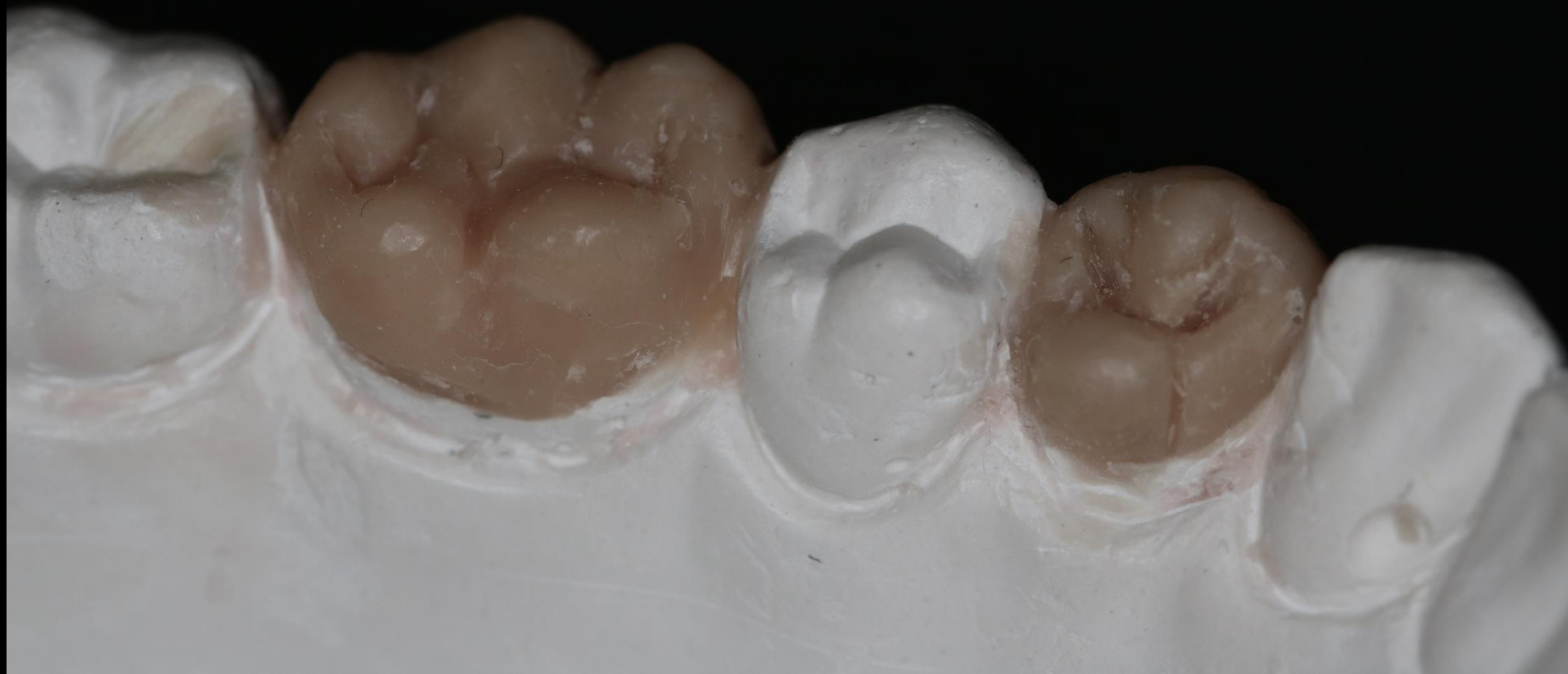
























Brina Završnik























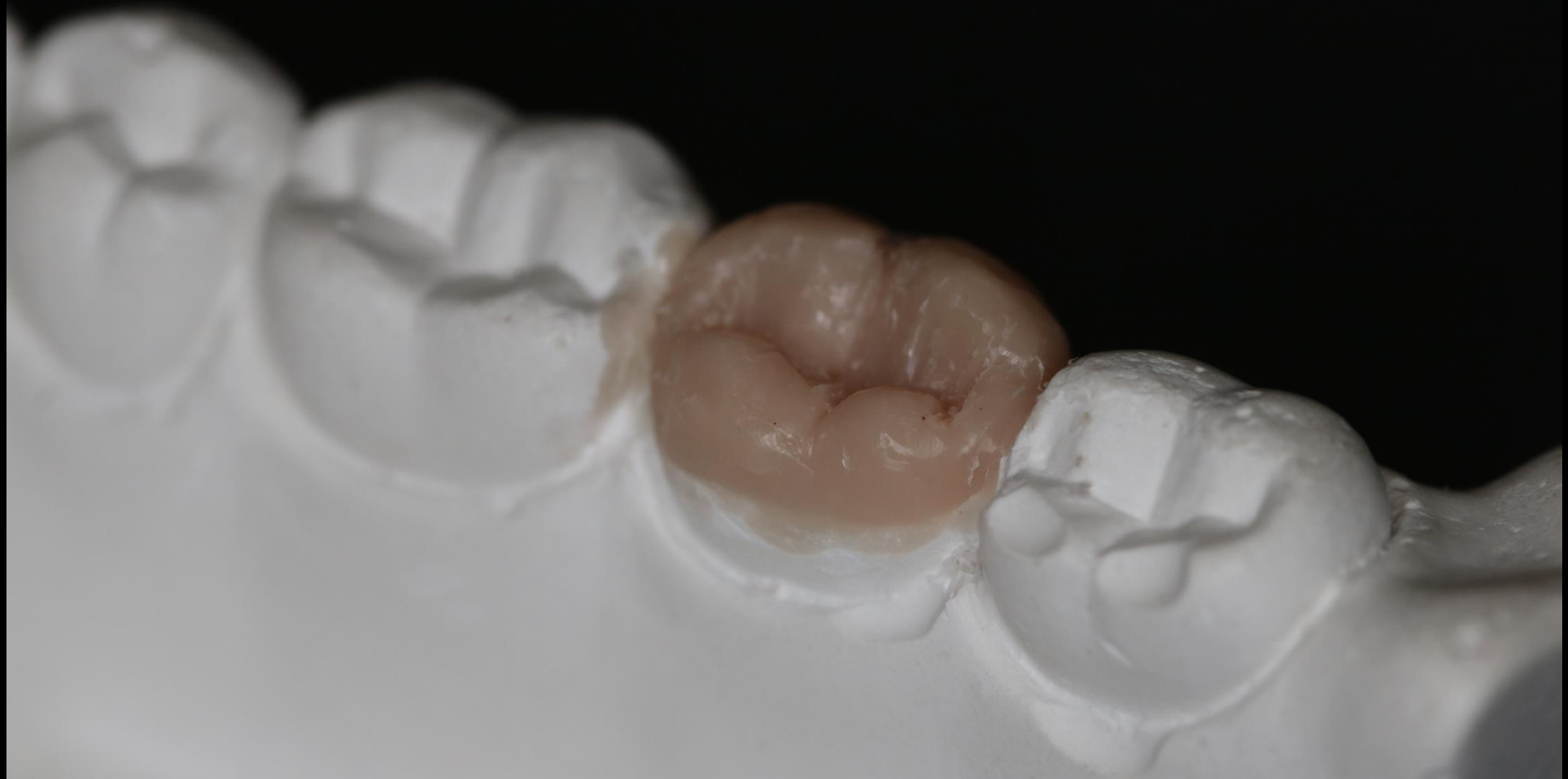
Eva Zupan







































Naše delo, bodisi v ustih pacienta ali v laboratoriju ne pozna podrobnosti, ki bi ne bile važne. Vse je važno, vse je odločilno za uspeh dela, kajti vsako delo je niz samih važnih podrobnosti, in ena sama podrobnost, ki bi jo prezrli, lahko pomeni včasih neuspeh vsega dela.

Mušič Z. O značaju zobnih oblik. Zobozdrav Vestn 1950; 5 (3-6): 123.